

DIKSON®

DIKSO
PLEX.™
DEFENSIVE.





A NEW 'DEFENSIVE' TECHNOLOGY TO SUPPORT THE INTEGRITY AND HEALTH OF THE HAIR.

THREE PRODUCTS

THREE PHASES

ONE SYNERGIC RESULT FOR HAIR PROTECTION AND THE INTEGRITY OF ITS HEALTH DURING TECHNICAL TREATMENTS AND USED ALONE.



DIKSO
PLEX.™
DEFENSIVE.

DIKSO LINE

DIKSOPLEX™ DEFENSIVE combines the effectiveness of an innovative technology and effective formulas to its **simplicity of use**. A few simple steps guarantee the best and most effective protection of the hair during technical treatments **without modifying traditional applications and without interfering on their duration and result**.

1. SHIELD,

blended with technical products, protects the intracellular structure's integrity of the hair and fortifies it by increasing its elasticity.

2. SHIELD MAGNIFIER,

fluid cream, completes the protective and strengthening action of DiksoPlex™ Defensive 1.Shield restoring the optimal conditions of hydration and nourishment.

3. FOLLOW UP,

bi-weekly home treatment, keeps the optimal conditions of hair hydration and nourishment, it improves brightness and softness.

PARABENS AND SULPHATES FREE.



DIKSO PLEX™
DEFENSIVE
1. SHIELD
500 ml – 100 ml

DIKSO PLEX™
DEFENSIVE
2. SHIELD MAGNIFIER
500 ml – 100 ml

DIKSO PLEX™
DEFENSIVE
3. FOLLOW UP
250 ml

DIKSO
PLEX.™
DEFENSIVE.

FORMULATI SENZA PARABENI E SOLFATI.

DIKSON®

DIKSO
PLEX.™
DEFENSIVE.

n°3 FOLLOW UP
WITH SODIUM PCA,
ARGININE,
AMINO ACIDS MIX

BI-WEEKLY HOME TREATMENT
FOR HAIR

250 ml - e - 8.45 Fl.oz

ITALIAN TECHNOLOGY

DIKSO ACTIVE INGREDIENTS:

DIKSOPLEX™ DEFENSIVE

It is made of **ProdeW®500**, a mix of **amino acids** that penetrate the internal and external structure of the hair and interact to repair even the most damaged hair fiber, restoring the ideal conditions of hydration, strength and texture.

WHAT'S **PRODEW®500** MADE OF?

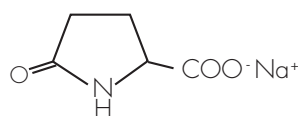
SODIUM PCA ARGININE 11 TYPES OF AMINO ACIDS

SODIUM PCA, by acting on the hair as a humectant, hydrates, softens and protects the colour. In fact, PCA augments the absorption capability of the fiber and improves the elasticity and resistance of the hair.

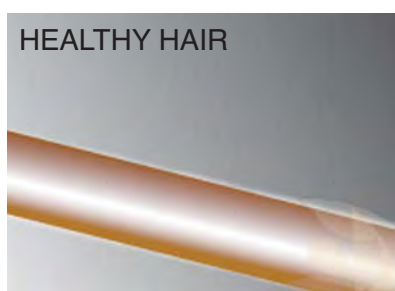
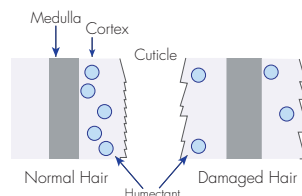
PCA increases the absorption capability of the fiber and improves hair elasticity and resistance.

ARGININE supports the PCA's action helping its absorption by the hair fiber. Thanks to its vasodilator effect, it favours a higher blood supply to the hair roots.

The mix of **11 TYPES OF AMINO ACIDS** is the same as the composition of the protein found in the CMC (Cell Membrane Complex), an intracellular concrete of cuticle and cortex that is responsible for hair thickening.



Humectant for healthy hair



DIKSO APPLICATIONS

A. FOR ALL THE **BLEACHING** TECHNIQUES (BLEACHING, STREAKS, BALAYAGES, SHATOUSH):

Mix ratio:

2 ml of DIKSOPLEX™ DEFENSIVE **1. SHIELD** for each **10 g** of bleaching powder.
(e.g.: to 30 g of powder + 45 ml of oxidizing emulsion, add 6 ml of DiksoPlex™ Defensive 1.Shield). Use the measuring cup provided.

FIRST PHASE IN THE BEAUTY SALON: 1.SHIELD

Blend the bleaching powder and the oxidizing emulsion. Add 2 ml of DIKSOPLEX™ DEFENSIVE **1. SHIELD** for each 10 g of bleaching powder used and stir. Distribute the blend on every lock with the brush and allow it to rest until the desired tone of bleaching is obtained. Rinse accurately and apply the shampoo.

SECOND PHASE IN THE BEAUTY SALON: 2.SHIELD MAGNIFIER

Apply the necessary quantity of product according to the length and porosity of the hair (about 10 ml for medium-long hair). Comb to evenly distribute the product and allow it to rest from 5 to 10 minutes. Rinse accurately and dry.



THIRD PHASE, AT HOME: 3.FOLLOW UP

To keep and prolong the optimal conditions of hair hydration and nourishment and to give brightness and softness to the hair, recommend to the Client the use of DIKSOPLEX™ DEFENSIVE **3. FOLLOW UP** twice a week.

B. WITH **SUPER BLEACHING** COLOURING CREAMS (COLOURING CREAM : OXIDIZING AGENT MIX RATIO: 1:2):

Mix ratio:

4 ml of DIKSOPLEX™ DEFENSIVE 1. **SHIELD** every **25 g** of **Super Bleaching Colouring Cream** (e.g.: to 50 g of Super Bleaching Colouring Cream + 100 ml of oxidizing emulsion, add 8 ml of DIKSOPLEX™ DEFENSIVE 1. **SHIELD**). Use the measuring cup provided.

FIRST PHASE IN THE BEAUTY SALON: 1.SHIELD

Blend the Super Bleaching Colouring Cream with the oxidizing emulsion. Add 4 ml of DIKSOPLEX™ DEFENSIVE 1. **SHIELD** for every 25 g of Super Bleaching Colouring Cream used, and stir. Distribute the blend on every lock with the brush and allow it to rest as recommended for the Super Bleaching Colouring Cream. Rinse accurately and apply the shampoo.

SECOND PHASE IN THE BEAUTY SALON: 2.SHIELD MAGNIFIER

Apply the necessary quantity of product according to the length and porosity of the hair (about 10 ml for medium-long hair). Comb to evenly distribute the product and allow it to rest from 5 to 10 minutes. Rinse accurately and dry.



THIRD PHASE, AT HOME: 3.FOLLOW UP

To keep and prolong the optimal conditions of hair hydration and nourishment and to give brightness and softness to the hair, recommend to the Client the use of DIKSOPLEX™ DEFENSIVE 3. **FOLLOW UP** twice a week.

DIKSO APPLICATIONS

C. WITH COLOURING CREAMS

(COLOURING CREAM : OXIDIZING AGENT MIX RATIO: 1:1):

Mix ratio:

2 ml of DIKSOPLEX™ DEFENSIVE 1. SHIELD every **20 g** of Colouring Cream.

(e.g.: to 60 g of Colouring Cream + 60 ml of oxidizing emulsion, add 6 ml of DIKSOPLEX™ DEFENSIVE 1. Shield). Use the measuring cup provided.

FIRST PHASE IN THE BEAUTY SALON: 1.SHIELD

Blend the Colouring Cream with the oxidizing emulsion. Add 2 ml of DIKSOPLEX™ DEFENSIVE 1. SHIELD every 20 g of Colouring Cream used, and stir. Distribute the blend on every lock with the brush and allow it to rest as recommended for the Colouring Cream. Rinse accurately and apply the shampoo.

SECOND PHASE IN THE BEAUTY SALON: 2.SHIELD MAGNIFIER

Apply the necessary quantity of product according to the length and porosity of the hair (about 10 ml for medium-long hair). Comb to evenly distribute the product and allow it to rest from 5 to 10 minutes. Rinse accurately and dry.



THIRD PHASE, AT HOME: 3.FOLLOW UP

To keep and prolong the optimal conditions of hair hydration and nourishment and to give brightness and softness to the hair, recommend to the Client the use of DIKSOPLEX™ DEFENSIVE 3. FOLLOW UP twice a week.

DIKSON®

D. WITH DIRECT COLOURING CREAMS

Mix ratio:

1 ml of DIKSOPLEX™ DEFENSIVE 1. SHIELD for every **10 ml** of Direct Colouring Cream.

Use the measuring cup provided.

IN THE SALON: after bleaching, pigment the hair as usual, using a 1ml blend of DIKSOPLEX™ DEFENSIVE 1. SHIELD for every 10 ml of Direct Colouring Cream.

AT HOME: as for colour service, recommend to the Client the use of DIKSOPLEX™ DEFENSIVE 3.FOLLOW UP twice a week.

DIKSON®

DIKSO
PLEX.™
DEFENSIVE.

n° 1 SHIELD

WITH SODIUM PCA,
ARGININE,
AMINO ACIDS MIX

FOR HAIR

DIKSON

DIKSO
PLEX.™
DEFENSIVE

n° 2 SHIELD MARG

WITH SODIUM PCA,
ARGININE,
AMINO ACIDS MIX

FLUID CREAM FOR HAIR

100 ml - 3.38 fl. oz.

DIKSO APPLICATIONS

E. FOR CHEMICAL HAIR STRAIGHTENING

Mix ratio:

10 ml of DIKSOPLEX™ DEFENSIVE **1. SHIELD** every **50 g** of Straightening Cream.

Use the measuring cup provided.

FIRST PHASE IN THE BEAUTY SALON: 1.SHIELD

After washing the hair, blend 10 ml of DIKSOPLEX™ DEFENSIVE **1. SHIELD** for every 50 g of Straightening Cream. Apply as usual and rinse. Apply the required quantity of neutralizer, allow it to rest and rinse accurately.

SECOND PHASE IN THE BEAUTY SALON: 2.SHIELD MAGNIFIER

Apply the necessary quantity of product according to the length and porosity of the hair (about 10 ml for medium-long hair). Comb to evenly distribute the product and allow it to rest from 5 to 10 minutes. Rinse accurately and dry.

THIRD PHASE, AT HOME: 3.FOLLOW UP

To keep and prolong the optimal conditions of hair hydration and nourishment and to give brightness and softness to the hair, recommend to the client the use of DIKSOPLEX™ DEFENSIVE **3. FOLLOW UP** twice a week.



F. WITH PERM SERVICE

Use the measuring cup provided.

Make the perm service following the standard procedure and rinse accurately.

Apply the neutralizer and allow it to rest as long as necessary, remove the curlers and dry with a towel.

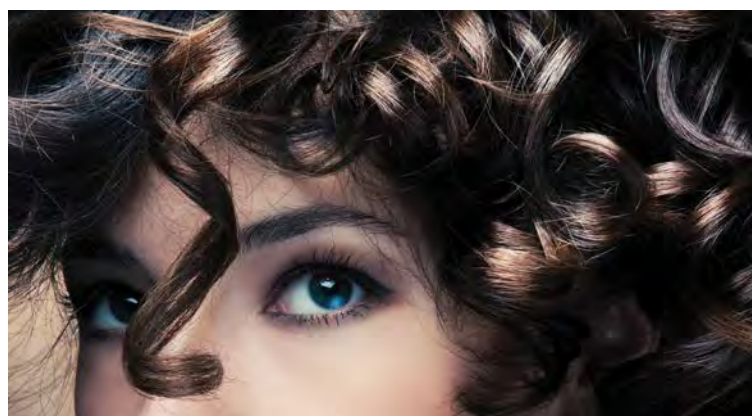
FIRST AND SECOND PHASE IN THE SALON: 1. SHIELD.

Apply evenly DIKSOPLEX™ DEFENSIVE 1. SHIELD directly on hair, from roots to ends. On medium-long hair apply **25/30 ml** of product. Allow it to rest for 10 minutes. **Do not rinse.**

On unrinsed hair, apply DIKSOPLEX™ DEFENSIVE 2. SHIELD MAGNIFIER and fully cover the hair length. Allow it to rest for 5 minutes, rinse accurately and dry.

THIRD PHASE, AT HOME: 3. FOLLOW UP

To keep and prolong the optimal conditions of hair hydration and nourishment and to give brightness and softness to the hair, recommend to the client the use of DIKSOPLEX™ DEFENSIVE 3. FOLLOW UP twice a week.



G. AS A PROTECTIVE AND RECONSTRUCTION TREATMENT:

Use the measuring cup provided.

DIKSOPLEX™ DEFENSIVE can be used as a protective and reconstruction treatment for hair, not in association with chemical treatments.

IN THE SALON:

Blend **10 ml** of DIKSOPLEX™ DEFENSIVE 1. SHIELD with **15 ml** of DIKSOPLEX™ DEFENSIVE 2. SHIELD MAGNIFIER. Apply from roots to ends and expose to humid heat for 15 minutes. Rinse. On damp hair, apply again and evenly DIKSOPLEX™ DEFENSIVE 2. SHIELD MAGNIFIER. Allow it to rest for 5 minutes, rinse accurately and dry.

AT HOME:

To keep and prolong the optimal conditions of hair hydration and nourishment and to give brightness and softness to the hair, recommend to the client the use of DIKSOPLEX™ DEFENSIVE 3. FOLLOW UP twice a week.



MACRO KIT 3x500 ml

1 DIKSOPLEX™ DEFENSIVE 1. SHIELD BOTTLE
2 DIKSOPLEX™ DEFENSIVE 2. SHIELD
MAGNIFIER BOTTLES



MICRO KIT 3x100 ml

1 DIKSOPLEX™ DEFENSIVE 1. SHIELD
BOTTLE
2 DIKSOPLEX™ DEFENSIVE 2. SHIELD
MAGNIFIER BOTTLES



DIKSOPLEX™ DEFENSIVE
3. FOLLOW UP
BOTTLE 250 ml

DIKSO FAQ

TO WHOM SHALL WE RECOMMEND DIKSOPLEX™ DEFENSIVE?

To all those clients who require technical treatments at the salon and to those who have damaged hair due to repeated technical treatments.

DO APPLICATION METHODS CHANGE WHEN WE USE DIKSOPLEX™ DEFENSIVE?

DIKSOPLEX™ DEFENSIVE does not modify in any way the habitual methods of application of technical services, nor in their application phases, or in their timing, but it guarantees the protection of hair structure during the treatments.

HOW TO BLEND DIKSOPLEX™ DEFENSIVE 1.SHIELD WITH THE COLOURING CREAM WHEN THE MIX RATIO WITH THE OXIDIZING EMULSION IS DIFFERENT FROM 1:1 (AS IN THE INSTRUCTIONS)?

Whether the mix ratio of the colouring cream is 1:1 or 1:1.5, the dilution with DIKSOPLEX™ DEFENSIVE 1.SHIELD does not change; it is still 2 ml of product every 20 ml of colouring cream. The dilution changes when the mix ratio with the oxidizing emulsion is for a super bleaching colouring cream: in this case, 4 ml of DIKSOPLEX™ DEFENSIVE 1.SHIELD are used for every 25 g of Super Bleaching Colouring Cream.

IS IT POSSIBLE TO MAKE TWO TECHNICAL SERVICES IN THE SAME DAY WITH DIKSOPLEX™ DEFENSIVE?

Yes, if the structure of the hair allows it.

IS THE BLEACHING POWER OF THE BLEACHING AGENT REDUCED IF USED IN A BLEND WITH DIKSOPLEX™ DEFENSIVE?

No, the bleaching power does not change. However, it is fundamental to respect the blending doses.

CAN DIKSOPLEX™ DEFENSIVE BE USED ON HAIR THAT HAS BEEN CHEMICALLY TREATED BEFORE?

Definitely yes, it is possible to use DIKSOPLEX™ DEFENSIVE system on hair that has been coloured, bleached, straightened or treated with permanent, even if its structure appears as intact.

WHEN DIKSOPLEX™ DEFENSIVE 2.SHIELD MAGNIFIER IS APPLIED, WHAT DOES THE “NECESSARY QUANTITY” INDICATED IN THE INSTRUCTIONS CORRESPOND TO?

DIKSOPLEX™ DEFENSIVE 1.SHIELD must be blended with a fixed proportion, as suggested in the instructions of each technical service.

While the quantity of DIKSOPLEX™ DEFENSIVE 1.SHIELD MAGNIFIER depends on the length of the hair and its porosity. As a consequence, the dose can be proportioned to the one used if the product were a mask or a conditioner.

IS IT POSSIBLE TO USE DIKSOPLEX™ DEFENSIVE ON HAIR EXTENSION?

Definitely yes. The modalities of use are identical both for natural hair and hair extension.

WHAT ARE THE COUNTERINDICATIONS FOR THE EXPOSURE OF DIKSOPLEX™ DEFENSIVE TO SOURCES OF HEAT?

There are no counterindications. However, it is recommended not to expose the hair during the treatment with DIKSOPLEX™ DEFENSIVE to temperatures superior to 40/45°C of humid heat. It is therefore recommended a more frequent control during the operations, since heat accelerates the action time of the colouring cream and bleacher.

ITALIAN TECHNOLOGY
MADE IN ITALY



MÜSTER & DIKSON s.p.A.

Via Privata da via Kennedy snc
20023 Cerro Maggiore (MI) - Italy
Tel. 0331-525111 (r.a.) - Fax 0331-525360
e-mail: sales@muster-dikson.com

Export Department:

Tel. +39 0331-525111 (r.a.) - Fax +39 0331-519627
e-mail: export@muster-dikson.com

MÜSTER & DIKSON ESPAÑA

Calle Vilardell, 34 - 1º piso - 08014 Barcelona
Tel. +34 93 421 0589
e-mail: carmen.gonzalez@muster-dikson.com

MÜSTER & DIKSON DO BRASIL

Escritório comercial Avenida Rebouças, N. 1.701,
Cerqueira Cesar São Paulo - SP Cep.: 05402-200
Tel. + 55 11 3064 5170 - www.muster-dikson.com.br

MÜSTER & DIKSON SUISSE

TECNOARREDA SA
Via Danas 5 - CH - 6929 Gravesano
Tel. +41 919416381 - Fax +41 919422557
www.tecnoarreda.com
e-mail: admin@tecnoarreda.com

MÜSTER & DIKSON NORTH AMERICA INC.

350 Harry Walker Parkway North - Suite 14
Newmarket Ontario - L3Y-8L3
Phone +1 905.235.5580 - Fax +1 905.235.5524
e-mail: info@dikson.ca

www.muster-dikson.com